

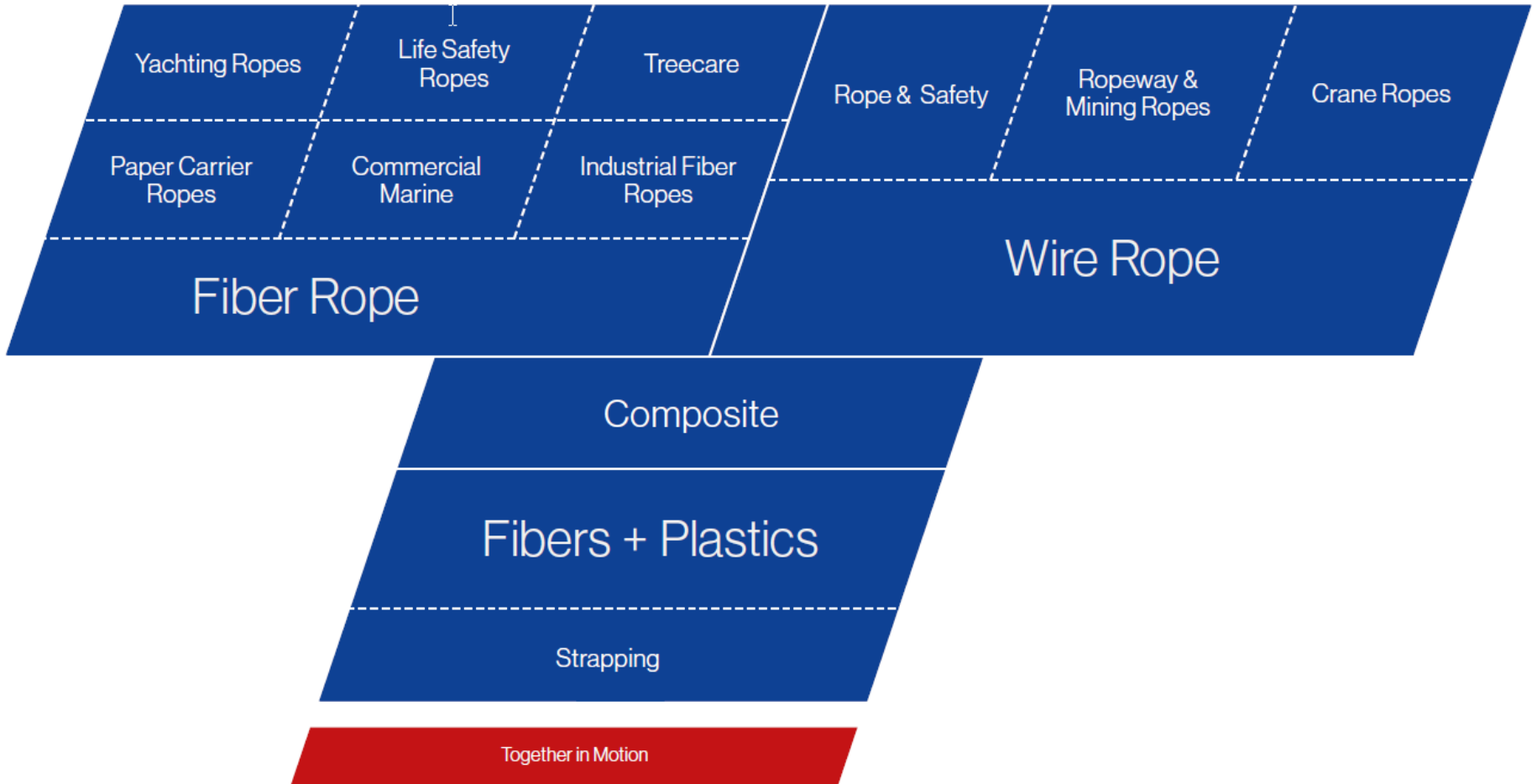
TEUFELBERGER SEIL GES.M.B.H.

HSO
10/05/2016

EXPERTISE FROM 225 YEARS OF EXPERIENCE

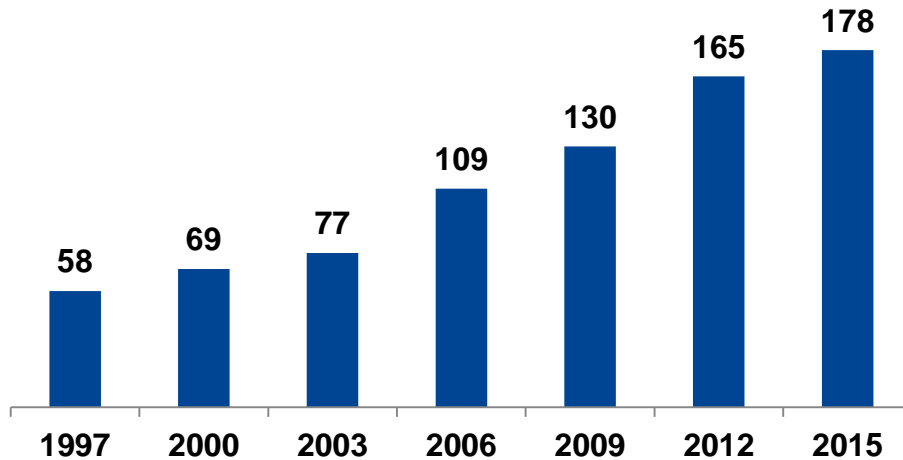
- 2014 Acquisition of a rope making company in Thailand
- 2009 First lightweight components made of composites
- 2007 Acquisition of New England Ropes, first base in the U.S.
- 1990 Acquisitions: FSE (Germany), Roblon (Denmark), St. Aegydy (Austria)
- 2001
- 1965 Production of first strapping
- 1941 First use of synthetic fibers
- 1917 Production of first steel wire rope
- 1790 Establishment of a ropery in Bad Wimsbach

TEUFELBERGER PORTFOLIO

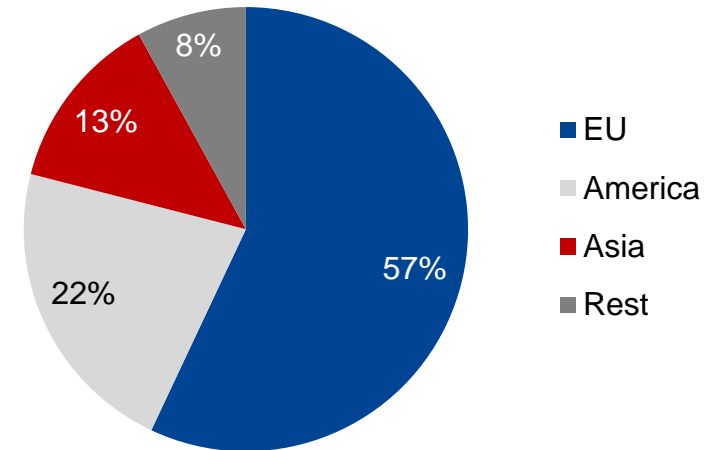


FACTS AND FIGURES IN 2015/2016

Sales in Mio. Euro



Distribution of Sales in %



950 employees / 7 locations /
5 % of all employees in R&D / 100 % family owned

TEUFELBERGER'S NETWORK

Fall River, US



Pranburi, TH



Billdal, SWE



Wels, AT



Wels, Headquarters, AT



St. Aegydy, AT



Veseli, CZ



TEUFELBERGER SEIL
GES.M.B.H. –
BUSINESS UNIT WIRE ROPE

HSO

03/08/2015

WIRE ROPE - SEGMENT „ROPEWAY“



Passenger ropeways



Winch ropes for slope groomers



GLETSCHERBAHN KAPRUN MEGA-ROPE MADE BY TEUFELBERGER

- Length: 10,500 Meter
- Weight: ca. 110 Tons
- Diameter: 52 mm



WIRE ROPE - SEGMENT „CRANES“



Offshore
cranes



Mobile
cranes



Ship
cranes



Container
cranes

LIEBHERR

Huisman



PETROBRAS

PALFINGER



MAERSK



OOG

ODEBRECHT
OIL & GAS

SIEMENS

MITTAL

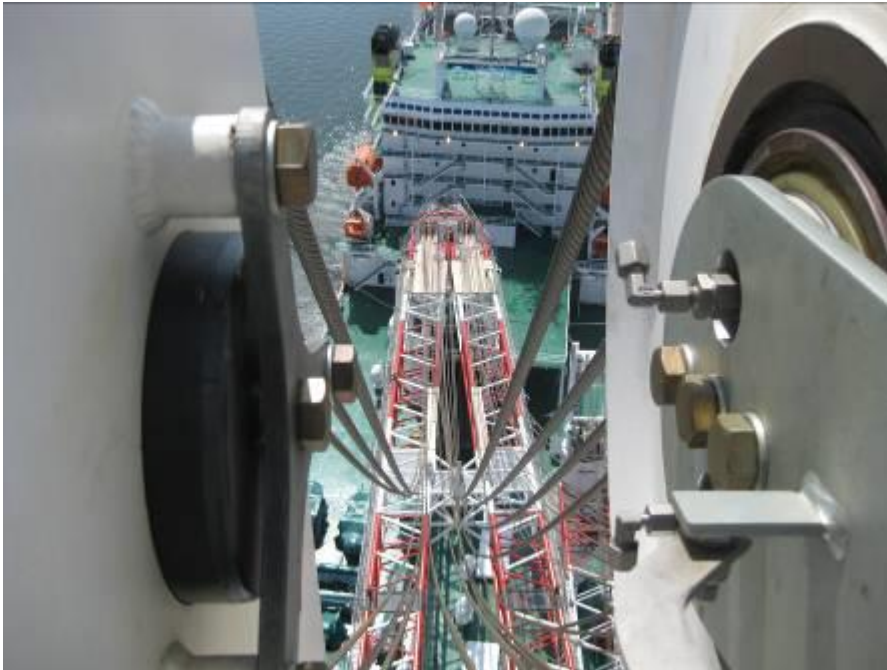


**DIAMOND
OFFSHORE**

Teufelberger
Together in Motion

MTC78000 HEAVY LIFT OFFSHORE

- 9 high-performance crane ropes
- Total weight: ca. 90 Tons
- Total length: 7,500 Meter



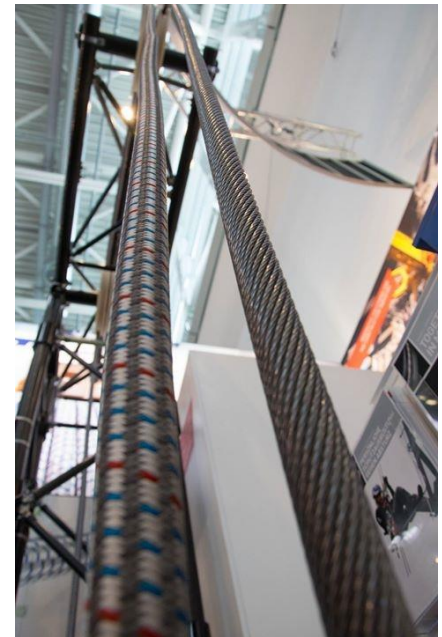
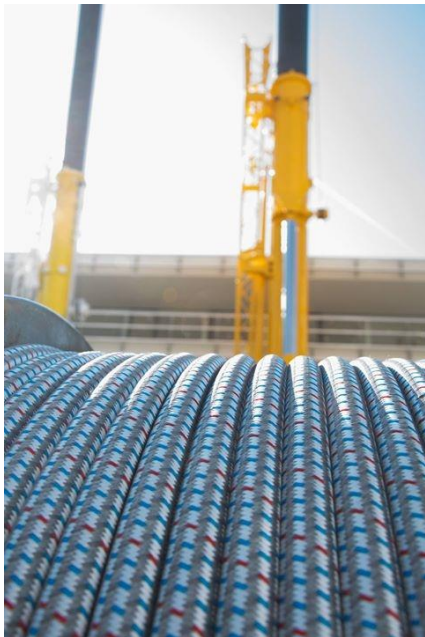
BIGGEST EVOLUTION TK18 DELIVERED TO PARTNER IN UK

- Length : 1,350 Meter
- Rope Type : EVOLUTION TK18
- Diameter : 76 mm
- Use : A&R Winch



LATEST INNOVATION „soLITE“ FOR LIEBHERR

- **Liebherr and Teufelberger develop a high-strength fibre rope for crane operation**
- New development for tower cranes, mobile and crawler cranes, as well as maritime cranes from Liebherr



SEGMENT MINING

WIRE ROPE - SEGMENT „MINING“



Underground Mining



Material Ropeways



Cable belt conveyors



Cable cranes

REFERENCES MINING

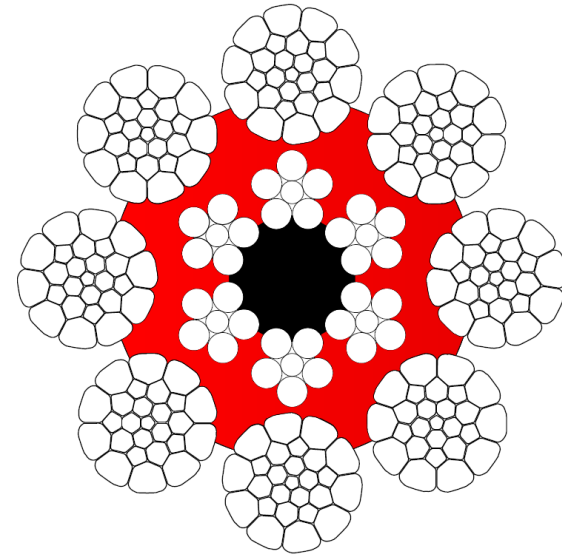


HOIST INSPECTION USA 2016



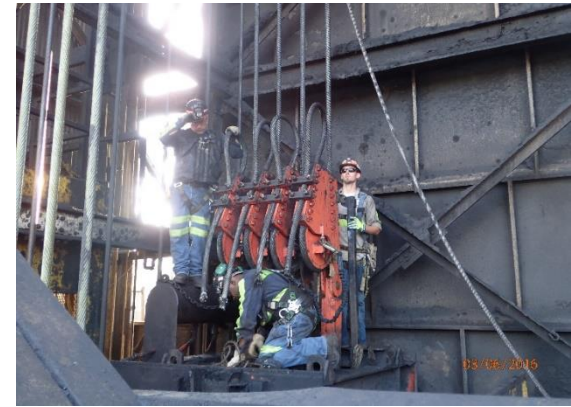
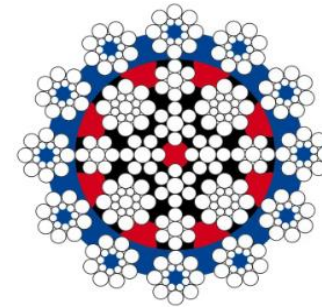
HOIST INSPECTION USA 2016 - HOIST ROPE DATA

- Mineral: Silver
- Country: USA
- Mineral: Silver
- Rope Type: Q-Mining
- Nom. Diam.: 44,45 mm
- Min. Breaking Force: 1489 kN
- Mass per Length: 6,94 kg/m
- Standard: CFR-30
- Length: 2 x 2286 m
- **Delivery: 2016**
- Application: Double Drum
- Layers: 4



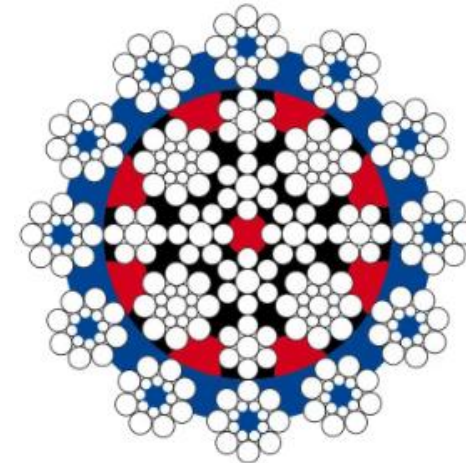
ROPE INSTALLATION IN USA 2016

- Koepe hoist
- Rope type: NOROTEC MT 83
- Replacement of: Acelor Mittal (Trefil)
- Date of installation: 01.06.2016



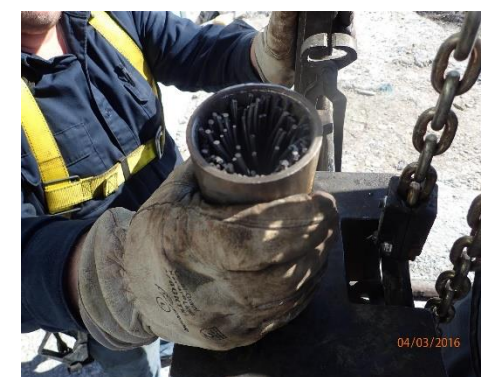
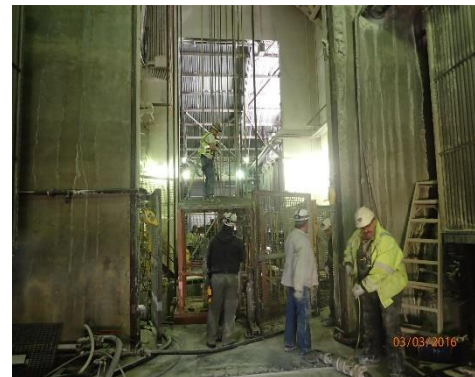
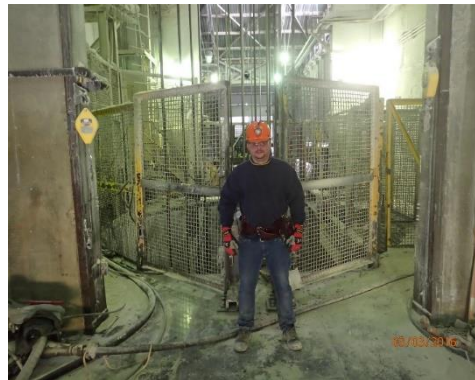
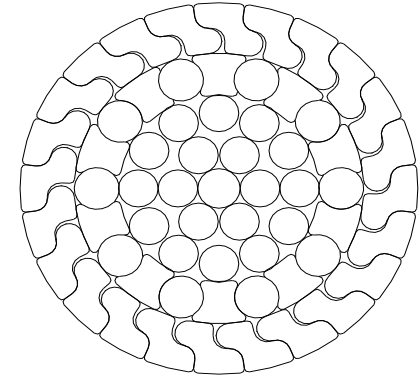
ROPE INSTALLATION IN USA 2016 – ROPE DATA

- Country: USA
- Mineral: Coal
- Rope Type: Norotec MT 83
- Nom. Diam.: 41 mm
- Min. Breaking Force: 1120 kN
- Mass per Length: 6,94 kg/m
- Standard: CFR-30
- Length: 4 x 736 m
- Delivery: 2016
- Application: Friction drum
- Lining: Becorit

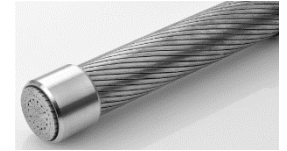


ROPE INSTALLATION IN USA 2016

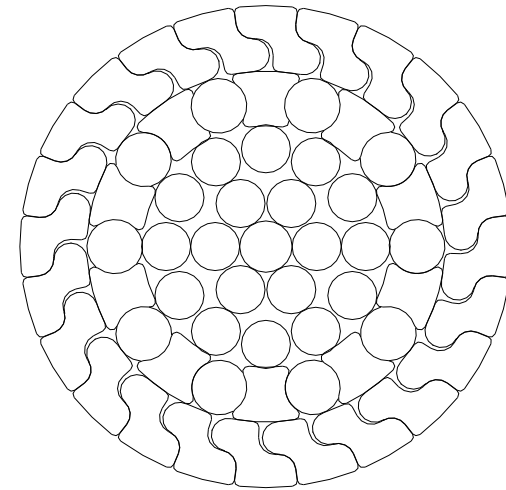
- Koepe hoist
- Rope type: FULL LOCKED COIL hoist rope
- Replacement of: Bridon
- Date of installation: 03.03.2016



HOIST ROPE (PRODUCTION SHAFT)



- Country: USA
- Mineral: Potash
- Rope Type: FLCR
- Nom. Diam.: 30 mm
- Min. Breaking Force: 824 kN
- Mass per Length: 5,08 kg/m
- Standard: CFR-30
- Length: 5 x 524 m
- Delivery: 2015
- Application: Friction drum
- Lining: Becorit



HOIST INSPECTION – RUSSIA 2016

- Double Drum – Single Layer
- Rope type: Q-Mining
- Rope Supply and installation: 2017



RESCUE OF 33 MINERS IN CHILE 2010

- Air transport from Austria to Chile
- Rope Type: NOROTEC® MT 91
- Total Length: 1,000 Meter
- Diameter: 24 mm



OUR VISION AND GOAL IN MINING

THE NAME TEUFELBERGER STANDS FOR THE MOST INNOVATIVE MINING ROPES MADE IN THE HIGHEST QUALITY FOR HEAVY DUTY MINING APPLICATIONS.

WE HELP OUR CUSTOMERS REDUCE PRODUCTION COSTS BY OFFERING CUSTOMER-SPECIFIC ROPES ACCORDING TO THEIR NEEDS.

WE WANT TO BE NUMBER ONE IN TERMS OF QUALITY, ROPE PERFORMANCE AND CUSTOMER SERVICE.

WE WANT TO BE A STRATEGIC PARTNER OF OUR CUSTOMERS AND NOT JUST A ROPE SUPPLIER!

Together in Motion